

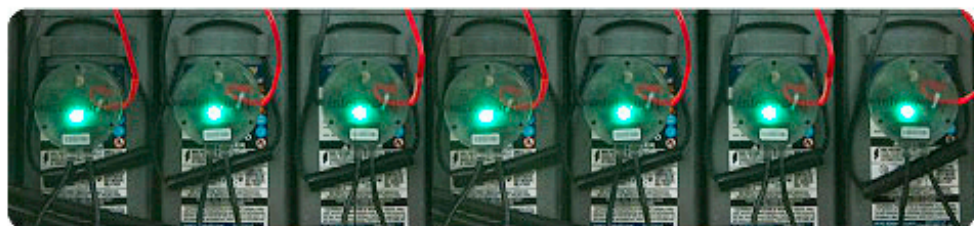
Mission CRITICAL

Data center and emergency backup solutions

December 8, 2009

[HOME](#) | [FEATURES](#) | [WEBINARS](#) | [VIDEOS](#) | [OPEN FORUM](#) | [NEW PRODUCTS](#) | [COLUMNS](#) | [EDUCATION](#)
[CALENDAR](#) | [ADVISORY BOARD](#) | [CAREERS](#) | [LINKS](#) | [BLOG](#) | [BUYERS GUIDE](#) | [CONTACT US](#) | [ADVERTISE](#)

Featured Technologies



[IntelliBatt](#) announced a set of turnkey solutions for data centers, telecommunications, and others that will reduce battery systems costs up to 35 percent as well as reduce the headache and hidden cost associated with managing multiple vendor services at the 20th anniversary of the 7x24Exchange Fall conference in Phoenix. The IntelliBatt branded turnkey solution offers a new modular combination:

- Superior batteries with built-in monitor and web-based remote monitoring
 - Easy-to-access cabinets, certified technicians and installation
 - Bi-directional secure communication with IntelliBatt's operations center supported by battery expert analysis and reporting
 - Conditions based vs. time based maintenance and battery replacement to pre-empt power failure and extend battery life
- IntelliBatt monitoring taps into the world's largest database for battery performance which provides quick view analysis of hundreds of live sites to identify potential trouble points - before they lead to failure. This service offering provides customers with real-time data and/or professional battery reports (alerts) through any web browser, fixed or mobile, powered by IntelliBatt's sister company, Data Power Monitoring Corporation's patented Battery Automated Reporting (BAR) system.

[More Products](#)

[HP's IP Console Switch G2](#)--with Virtual Media and Common Access Card (CAC) support--is a key component in managing the heterogeneous data center. Combined with the IP Console



Viewer software, the IP switch enables remote access to multiple servers running various operating systems. Virtual Media capability allows a removable drive or ISO image to be remotely mapped to an attached server in the data center or a remote office for software installations and upgrades. An intuitive Local Console User Interface provides menus for configuration, virtual media, display, and even security and upgrades from the local console that is the same as the On Board Web Interface (OBWI) used for remote management.

[More Products](#)